

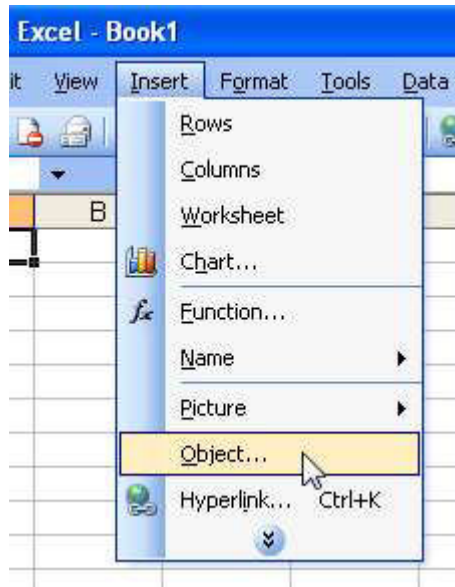
ActiveBarcode

Embed and automate a barcode in an Excel sheet

Excel 97, 2000, XP and 2003

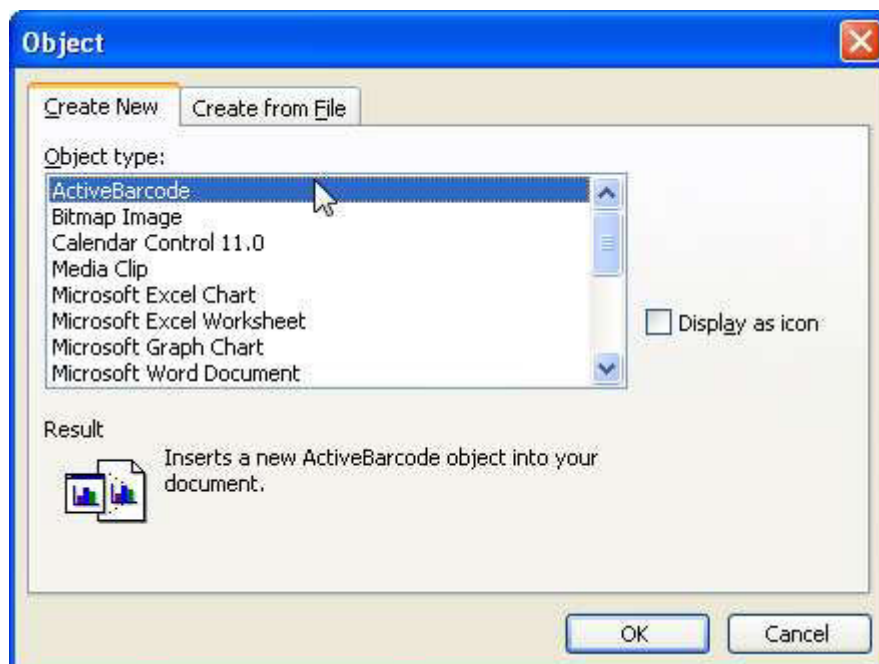
1

A short description of how to add a barcode to your Excel sheet and link it with a cell: First launch Excel and create a new sheet or open an already existing sheet. Now go to the menu "Insert" and select "Object..." from that item list:



2

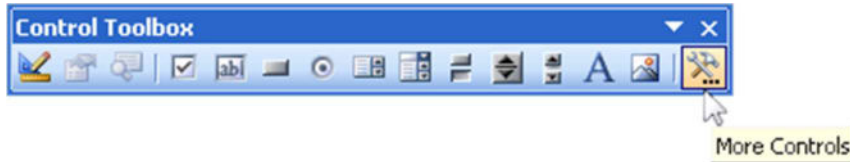
A dialog box appears:



3


Select "ActiveBarcode" now and click "Ok".

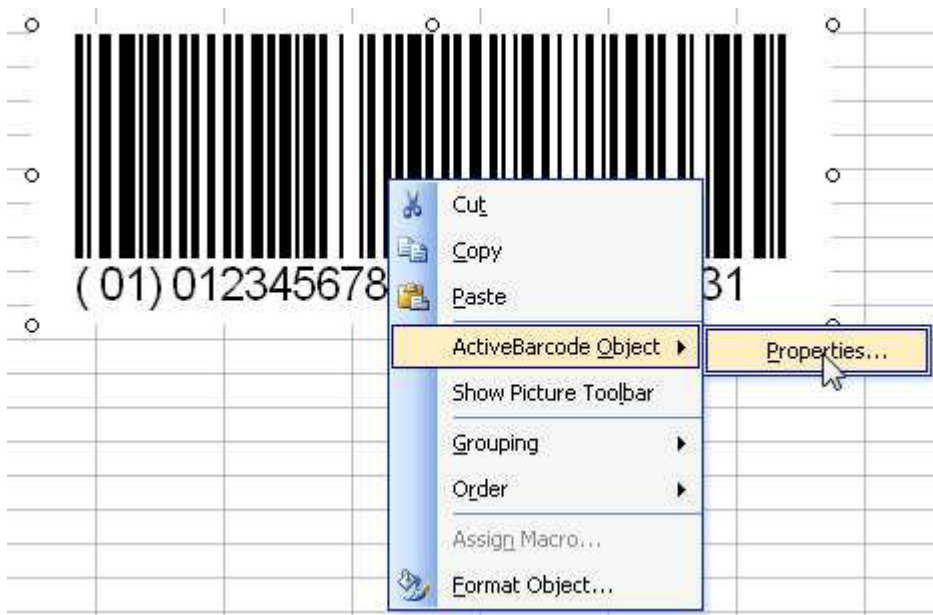
Alternatively you can use the function "More controls..." from the "Control Toolbox" of Excel to embed the control:



4

Now a barcode will be created inside your document. The embedded barcode will be a standard barcode of EAN-128 type. This is the default type. You can change this to any barcode type supported by ActiveBarcode: QR Code, GS1/EAN-128, Data Matrix, GTIN/EAN-13, Code 39, Code 93, GS1-Data Matrix, Code 128, PDF417, DUN-14, EAN-8, EAN-14, EAN-18, ISBN, ITF-14, NVE, PZN8, SCC-14, SSCC-18, ...

Next switch to the "design mode" of Excel (e.g. use this button: ). Now you can modify this barcode. You can change the type, text, colors etc. For this click inside the barcode with the right mouse button. A pop up menu will open:



5

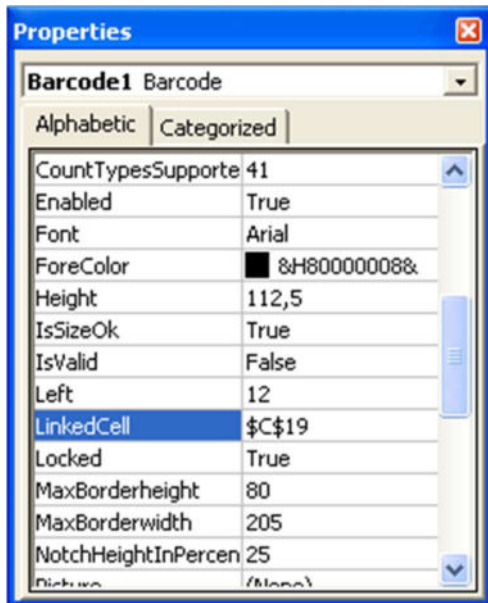
Select "ActiveBarcode-Object" and then "Properties...". The property dialog of ActiveBarcode will open. Here you can modify the barcode as you like.

Alternatively you can use the property dialog of Excel. For this use the following button names "Properties" in your symbol bar "Control-Toolbox":



6

Create a link between a cell and the barcode: Open the property dialog of Excel as described above. Now activate the barcode object by clicking onto it once. The property dialog will now display all the properties of the barcode object. Have a look for the property named "LinkedCell". This allows a link between a cell and the barcode:



7

Enter the cell's name for the link into this property. That's it!

Copyright © 1994-2025 Frank Horn & Lars Schenk

All trademarks and product names mentioned are the property of their respective owners.