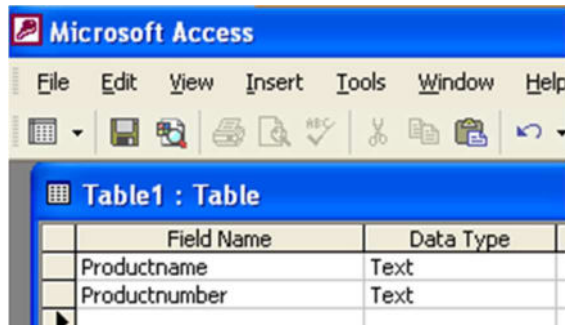


ActiveBarcode

Barcodes in an Access 2000, XP, 2003 database form

1

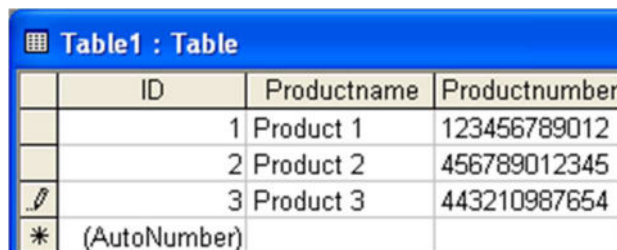
Here we show you how to add a barcode into a Access database and bind it to a data field. First launch Access and create a new database or open an already existing database in what you want to add a barcode. A simple database could look like this:



Field Name	Data Type
Productname	Text
Productnumber	Text

2

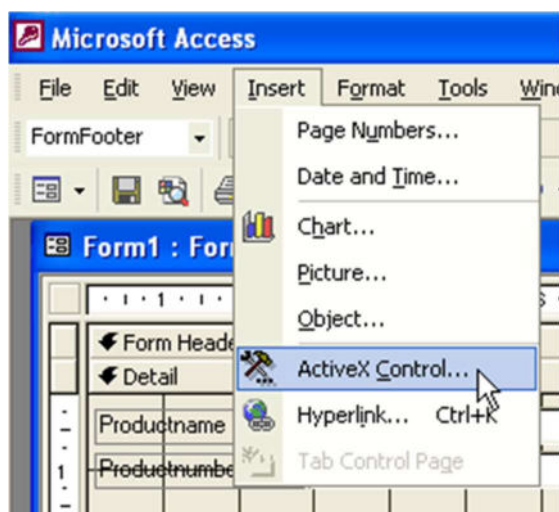
Fill the database with some data using the table. See this example:



ID	Productname	Productnumber
1	Product 1	123456789012
2	Product 2	456789012345
3	Product 3	443210987654

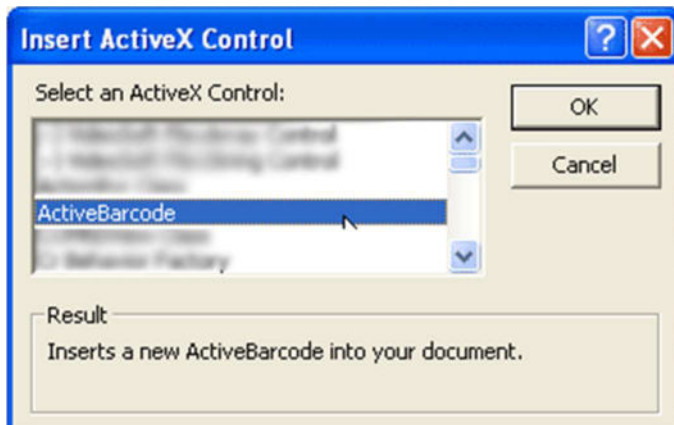
3

Next create a new form and add the ActiveBarcode control to the form. Goto to the menu and select from the the menu "Insert" the function "ActiveX Control...".



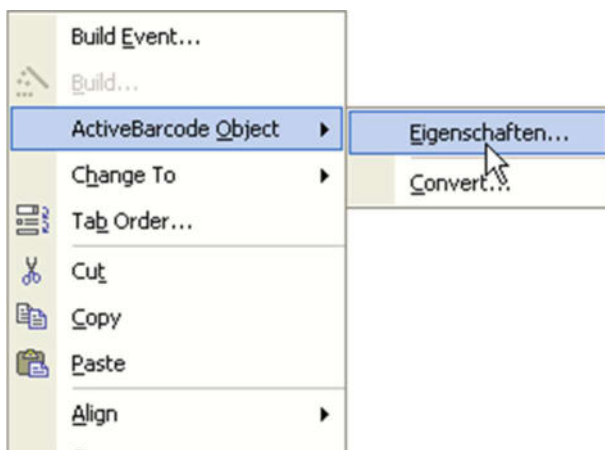
4

The following dialog will appear:



5

Select "ActiveBarcode" here and click OK. Now the barcode object will be placed in your form. This will be a standard barcode of EAN-128 type. This is the default type. Now you can modify this barcode. You can change the type, text, colors etc. For this click inside the barcode with the right mouse button. A pop up menu will open:



6

Select "ActiveBarcode-Object" and then "Properties...". The property dialog of ActiveBarcode will open. Here you can modify the barcode as you like. For example you can change the type to any barcode type supported by ActiveBarcode: QR Code, GS1/EAN-128, Data Matrix, GTIN/EAN-13, Code 39, Code 93, GS1-Data Matrix, Code 128, PDF417, DUN-14, EAN-8, EAN-14, EAN-18, ISBN, ITF-14, NVE, PZN8, SCC-14, SSCC-18, ...

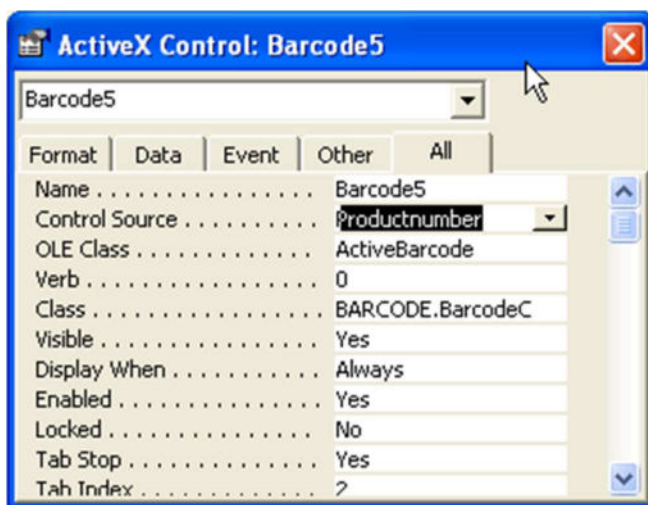
In this example we use the EAN-128, so there is no need to change the type now.

Next we bind the controls text property (the barcodes content) to the data field "Productnumber" of the database. Again click the barcode with the right mouse button and select "Properties":



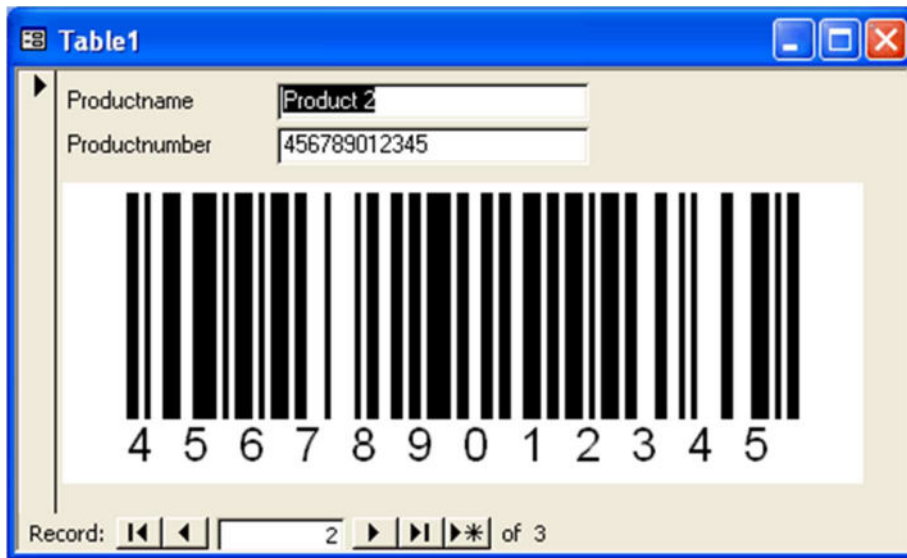
7

Have a look for the entry "Control Source" and change it to "Productnumber". This is the data binding:



8

Now close the design mode of the form and watch the result by simple opening the form:



The screenshot shows a Microsoft Access form window titled "Table1". Inside the form, there are two text boxes. The first is labeled "Productname" and contains the text "Product 2". The second is labeled "Productnumber" and contains the numeric string "456789012345". Below these text boxes is a large barcode that visually represents the product number. Underneath the barcode, the digits "4 5 6 7 8 9 0 1 2 3 4 5" are printed. At the bottom of the form, there is a record navigation bar that displays "Record: 2 of 3" with navigation icons for first, previous, next, and last records.

9

The barcode control is bound to the data base field and shows the product number of the current data set as EAN-128 barcode.

Embedding and binding an ActiveBarcode control into reports is very similar.

One last hint: A report is designed in a lower resolution than it is using while printing. So it is required that you create the barcode control with a much bigger font size than you would normally use. Otherwise the text line under the barcode may be very very small in your print.

Copyright © 1994-2025 Frank Horn & Lars Schenk

All trademarks and product names mentioned are the property of their respective owners.